



ENGINE

Make: Cummins
Type: QSB6.7 – Stage 5
Max. output: 129 kW (173hp) @ 2.200 rpm
Max. torque : 881 Nm @ 1.300 rpm
Displacement : 6,7 Lit.
Cylinders : 6 in line
Bore & stroke : 107 x 124 mm
Aspiration : Turbo and intercooler
Cooling : Watercooled

Make: Volvo
Type: TAD581VE –Stage 5
Max. output: 129 kW (175hp) @ 1.200 rpm
Max. torque : 810 Nm @ 1.200 rpm
Displacement : 5,1 lit.
Cylinders : 4 in line
Bore & stroke : 110 x 135 mm
Aspiration : Turbo and intercooler
Cooling : Watercooled

COOLING SYSTEM

Vertically built-in cooler

TRANSMISSION

Automatic transmission Allison type 3000 with hydraulic torque converter
Max. 6 speeds forward en 1 reverse
Ratio's : 3,49 - 1,86 - 1,41 - 1,00 - 0,75 - 0,65
Rev. : 5,03
Safety installed to prevent change of direction while moving

FRONT AXLE

Make : DAF
Type: 152NS
Capacity : 11.000 kg (20km/h)

REAR AXLE

Make : Kessler
Type: D81PL477
Capacity : 38.000 kg (20km/h)

SUSPENSION

Front : Parabolic leafsprings with 2 double acting shockabsorbers
Rear : Axle mounted on the chassis

TYRES

Front : 11R22,5 (2x)
Rear : 11R22,5 (4x)

BRAKES

Pneumatic braking system, independently controlled front and rear with air dryer
Parking brake with spring brake cylinders working on the rear wheels
Air-pressure connections behind the cabin
Air capacity: 120L

CABIN

Left Hand Drive
Tiltable one man cab with an air suspended seat with 2-point seat belt (ISRI 6860/880)
Suspended cabin with anti-vibration mounts in combination with shockabsorbers
Build by high quality 3mm steel plates and ROPS, FOPS tested
Opening of the revolving door is located on the side of the cab, safely accessible
Large, safe and tinted windows with a layered front window
Horizontal sliding window at the driver's side
2 large exterior rear view mirrors
Safety handlebars on the outside
Sun visor on the front window
Windscreen wiper and washer on front window
Inside of the cabin ergonomically finished in plastic and metal
Electronic screen with all the vehicle information

SWITCHES AND CONTROLS

Horn, Windscreen wipers, (Working-) Lights, Indicators, flashing light,
Parking brake, Transmission, 5th wheel, Start/Stop

DASHBOARD

Fuel level, Oil pressure, Coolingwater temperature, Air pressure,
Workinghours, Speed/RPM, Transmission oil temperature, Voltmeter

CONTROL LIGHTS

High beam, Indicators, Parking brake, Low fuel level, 5th wheel

CABIN INNER DIMENSIONS

Width: 1.400 mm
Lenght: 1.540 mm
Height: 1.750 mm

FIFTH WHEEL

2" Fifth wheel
2 double-acting hydraulic cylinders
Unlocked pneumatically at stand still, operated from inside the cabin
Capacity: 36.000 kg

HYDRAULIC SYSTEM

55L hydraulic tank
Hydraulic valve, electrically operated, to lift/lower the fifth wheel
Gear type hydraulic pump
Return line with replaceable filter elements

ELECTRICITY

24 Volt negative ground
2 Batteries, 180 Ah.
24V starter, Alternator
Electrically activated, pneumatically operated horn
Electrically activated reversing signal
Battery isolation switch, Electrical connections for trailer
Engine safety: oil pressure, coolant temp., coolant level
24V trailer connection at the rear of the cabin

LIGHTING

Headlights, LED Rearlights, LED Stoplights, Indicators, Beacon light,
Dashboard and cabin interior light
Worklight behind the cabin

FRAME

Welded S355JO steel construction
Steps and walkways with non-slip surfaces
Tough front- and rear bumper
Steelplate protection for air-, fuel- and hydraulic tank

AIR INLET

Heavy duty multistage air cleaner with cyclone principle

EXHAUST

Exhaust muffler with vertical outlet and heat protection
With aftertreatment system (Adblue)

FUEL SYSTEM

1 fuel tank of 200L
Waterseparator, Fuel cap

PAINTING

High build two pack primer/surfacer with high protection against corrosion
High build two pack acrylic lacquer with outstanding weather resistance
Cabin colour RAL by choice
Chassis colour RAL 7016 Grey

WEIGHTS

Empty weight: ca. 8.000 kg
Max G.C.W.: 80.000 kg

PERFORMANCES

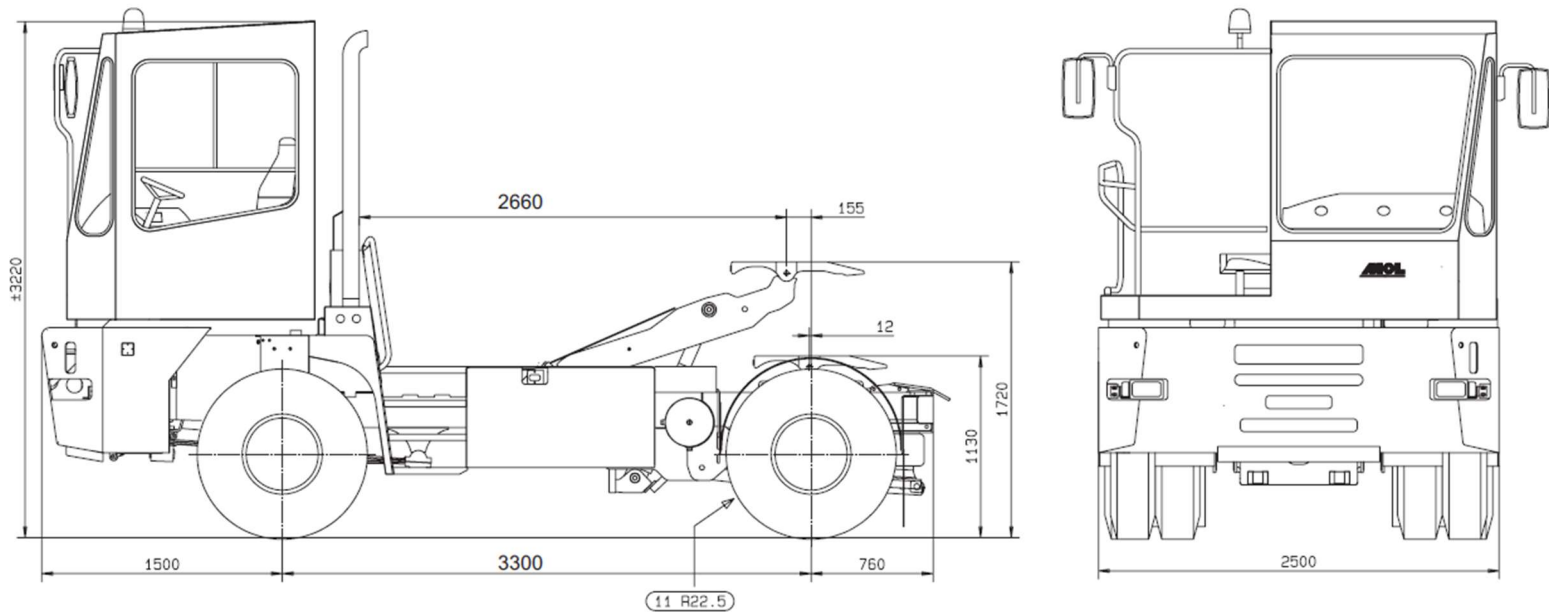
Max. speed empty: ca. 40 km/h (limitation possible)
Max. tractive effort: ca. 129 kN

Additional options:

- Airconditioning
- Air suspension on the rear axle
- Additional LED work lights (front, rear & cabin)
- Plastic or steel mudfenders
- Heated outside mirrors
- Inside mirror
- ...

(Other options available on request)

TECHNICAL DRAWING



MOL CY NV
DIKSMUIDESTEENWEG 68
8840 STADEN - BELGIUM
www.molcy.com
Sales: ttsales@molcy.com